



Product Change Notification

105662 - 00

Information in this document is provided in connection with Intel products. No license, express or implied, by estoppel or otherwise, to any intellectual property rights is granted by this document. Except as provided in Intel's Terms and Conditions of Sale for such products, Intel assumes no liability whatsoever, and Intel disclaims any express or implied warranty, relating to sale and/or use of Intel products including liability or warranties relating to fitness for a particular purpose, merchantability, or infringement of any patent, copyright or other intellectual property right. Intel products are not intended for use in medical, life saving, or life sustaining applications. Intel may make changes to specifications and product descriptions at any time, without notice.

Should you have any issues with the timeline or content of this change, please contact the Intel Representative(s) for your geographic location listed below. No response from customers will be deemed as acceptance of the change and the change will be implemented pursuant to the key milestones set forth in this attached PCN.

Americas Contact: asmo.pcn@intel.com

Asia Pacific Contact: apacgccb@intel.com

Europe Email: eccb@intel.com

Japan Email: jccb.ijkk@intel.com

Copyright © Intel Corporation 2005. Other names and brands may be claimed as the property of others.

AlertVIEW, AnyPoint, AppChoice, EtherExpress, FlashFile, i386, i486, i960, Intel, Celeron, Intel486, Intel740, IntelDX2, IntelDX4, IntelSX2, Itanium, LANDesk, LanRover, Pentium, Xeon, Intel Xeon, NetMerge, NetStructure, OverDrive, Paragon, PDCharm, StrataFlash is a trademark or registered trademarks of Intel Corporation or its subsidiaries in the United States and other countries.

Learn how to use Intel Trade Marks and Brands correctly at <http://www.intel.com/intel/legal/tmusage2.htm>.



Product Change Notification

Change Notification #: 105662 - 00
Change Title: Tray pocket change, PCN 105662-00, FYI, Changing from sitting ledge to tapered for packages with 8x10 & 10x8 dimensions
Date of Publication: November 22, 2005

Type of Change Notification:
FYI - (For Your Information)

Key Characteristics of the Change:
Transport Media

Forecasted Key Milestones:

Date Customer Must be Ready to Receive Post-Conversion Material:	Dec 30, 2005
---	--------------

Description of Change to the Customer:

Intel has made a change to the design of the tray pocket for packages with x/y dimensions of 8x10 & 10x8. The tray pocket design will be changed to a tapered pocket from the current ledge sitting design. The new tapered pocket JEDEC tray continues to meet the current design standards for 8x10 & 10x8 Packages (Generic Matrix Tray for Shipping and Handling, JEDEC Standard No-95-1 Nov. 1997 Revision C) Existing tray inventory will be depleted and replaced by new tray.

A tapered-pocket design can prevent units from getting misplaced in the pockets that could lead to chips.

Customer Impact of Change and Recommended Action:

Intel Corporation does not anticipate any impact to customer use.

There will be no change to the 8x10 & 10x8 package sizes or materials and the product will continue to meet Intel's stringent quality requirements.

Dimensions on the new trays are identical on all key parameters; including device seating height, pocket pitch and device orientation in the tray. There is no anticipated impact to the customer pick and place equipment. Older trays will interchangeably stack with the new tray. There is no change to the tray material and supplier.

Change to the JEDEC (shipping media): All critical dimensions on the JEDEC tray meet the same form, fit and function as the current manufacturer. Device unit count will remain the same at 300 pockets per tray.

The new JEDEC tray design will be identified by a new part number as shown below. In addition, during the transition period, to aid in

visually identifying the new tray from the old, a pink stripe will added on two sides of the tray. See example of placement of the stripe in the diagram below. Older style trays (the ledge sitting design) will not contain the pink stripe. These stripes will be discontinued once the transition is complete. The transition timeline is expected to be completed by February, 2006. During this time revised JEDEC trays will be shipped interchangeably and may be mixed within shipments.

JEDEC tray part revision added:

	Current Tray	New Tray
Seating ledge:	flat	tapered
P/N	500020241	500042909

**Products Affected / Intel Ordering Codes:
Component Product Table**

Affected Product Code	Affected Conversion Spec/ROM	Affected Conversion MM#
PF28F1602C3BD70875877		875877
PF28F1602C3TD70875880		875880
PF38F1020W0YBQ0862990		862990
PF38F1020W0YTQ0862993		862993
PF38F1030W0ZBQ0877040		877040
PF38F2030W0ZBQ2869666		869666
PF38F2030W0ZTQ2869665		869665
PF38F2040W0YBQ0863510		863510
PF38F2040W0YTQ0866436		866436
PF38F2040W0ZBQ1869411		869411
PF38F2040W0ZTQ1869626		869626
PF38F2240WWZDQ1865653		865653
PF38F3030L0ZTQ0874773		874773
PF38F3040L0YBQ0858997		858997
PF38F3040L0YBQ2871954		871954
PF38F3040L0YTQ0858989		858989
PF38F3040L0YTQ2872021		872021
PF38F3040L0ZBQ0867762		867762
PF38F3040L0ZBQ1871230		871230
PF38F3040L0ZTQ0867757		867757
PF38F3040L0ZTQ1871229		871229
PF38F3050L0YBQ2868443		868443
PF38F3050L0YTQ2868442		868442
PF38F3050L0ZBQ0868987		868987
PF38F3050L0ZBQ1870907		870907
PF38F3050L0ZTQ0868918		868918
PF38F3050L0ZTQ1870908		870908
PF38F3350LLZDQ0863438		863438
PF38F3352LLZDQ0861107		861107
PF48F2000P0ZBQ0874417		874417
PF48F2000P0ZTQ0874412		874412
PF48F3000L0YBQ0856594		856594
PF48F3000P0ZBQ0874291		874291

Affected Product Code	Affected Conversion Spec/ROM	Affected Conversion MM#
PF48F3000P0ZTQ0874294		874294
PF48F3300W0YBQ0865583		865583
RD28F1602C3BD70854731		854731
RD28F1602C3TD70854733		854733
RD28F1604C3BD70855156		855156
RD28F1604C3TD70855155		855155
RD38F1010W0YTL0853172		853172
RD38F1020W0YBQ0859064		859064
RD38F1020W0YBQ1868393		868393
RD38F1020W0YTQ0859065		859065
RD38F1030W0ZBQ0868177		868177
RD38F1030W0ZTQ0874476		874476
RD38F2010W0YTL0851834		851834
RD38F2020W0YBQ0854799		854799
RD38F2020W0YTQ0854814		854814
RD38F2020W0ZBQ0853273		853273
RD38F2020W0ZTQ0854296		854296
RD38F2030W0YBQ0854299		854299
RD38F2030W0ZBQ1854058		854058
RD38F2030W0ZBQ2869587		869587
RD38F2030W0ZTQ1854281		854281
RD38F2030W0ZTQ2869571		869571
RD38F2040W0YBQ0855092		855092
RD38F2040W0ZBQ0854753		854753
RD38F2040W0ZBQ1861433		861433
RD38F2240WWYDQ0854336		854336
RD38F2240WWZDQ0851836		851836
RD38F2240WWZDQ1853668		853668
RD38F2240WWZDQ1S L7CV	S L7CV	858373
RD38F2240WWZDQ2S L7JB	S L7JB	860878
RD38F3040L0YBQ0857879		857879
RD38F3040L0YBQ2871951		871951
RD38F3040L0YTQ0858699		858699
RD38F3040L0YTQ2871974		871974
RD38F3040L0ZBQ0857237		857237
RD38F3040L0ZTQ0856811		856811
RD38F3050L0YBQ1863127		863127
RD38F3050L0YBQ2871614		871614
RD38F3050L0YTQ1863130		863130
RD38F3050L0YTQ2871609		871609
RD38F3050L0ZBQ0858931		858931

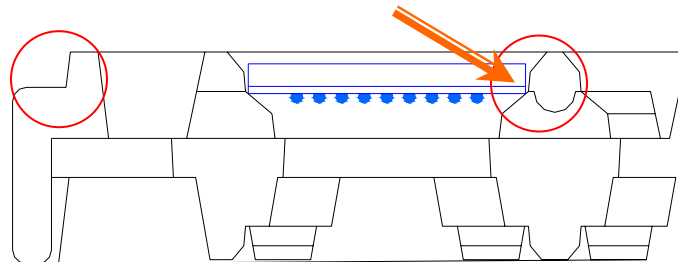
Affected Product Code	Affected Conversion Spec/ROM	Affected Conversion MM#
RD38F3050L0ZBQ1867446		867446
RD38F3050L0ZTQ0858930		858930
RD38F3252LLZDQ0856974		856974
RD38F3340LLYDQ1856505		856505
RD38F3340LLYDQ1S L78D	S L78D	856288
RD38F3350LLZDQ0859951		859951
RD38F3350WWZDQ1854817		854817
RD38F3352LLZDQ0856516		856516
RD48F2000P0ZBQ0874400		874400
RD48F2000P0ZTQ0874462		874462
RD48F3000L0YBQ0856575		856575
RD48F3000L0ZBQ0857328		857328
RD48F3000P0ZBQ0874381		874381
RD48F3000P0ZTQ0874297		874297
RD48F3000W0ZTQ0859791		859791
RD48F3300L0ZDQ0856517		856517
RD48F3300L0ZTD0857069		857069

Reference Documents / Attachments:

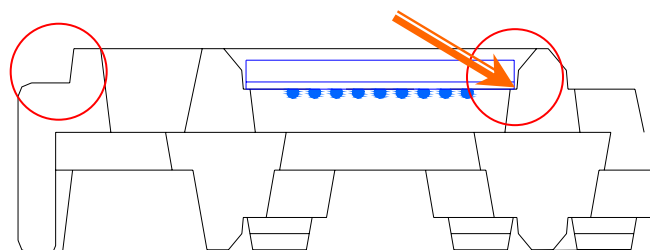
Document:

Location #:

[New design tapered pocket](#)



[Old design seating ledge pocket](#)



Intel Flash Stripping

<Stripping System>



PCN Revision History:

Date of Revision:

November 15, 2005

Revision Number:

00

Reason:

Originally Published PCN