



Product Change Notification

Change Notification #: 119468-00

Change Title: Select Intel® Killer Wi-Fi 6E AX1675 PCI Card
Intel® Killer Wi-Fi 6E AX1675 w (Gig+), 1216,
Intel® Wi-Fi 6E AX210 (Gig+), 1216,
PCN 119468-00, Label, Transport Media
Packaging Logos, Label, and Desiccant Bag Update

Date of Publication: March 02, 2023

Key Characteristics of the Change:

Label, Transport Media

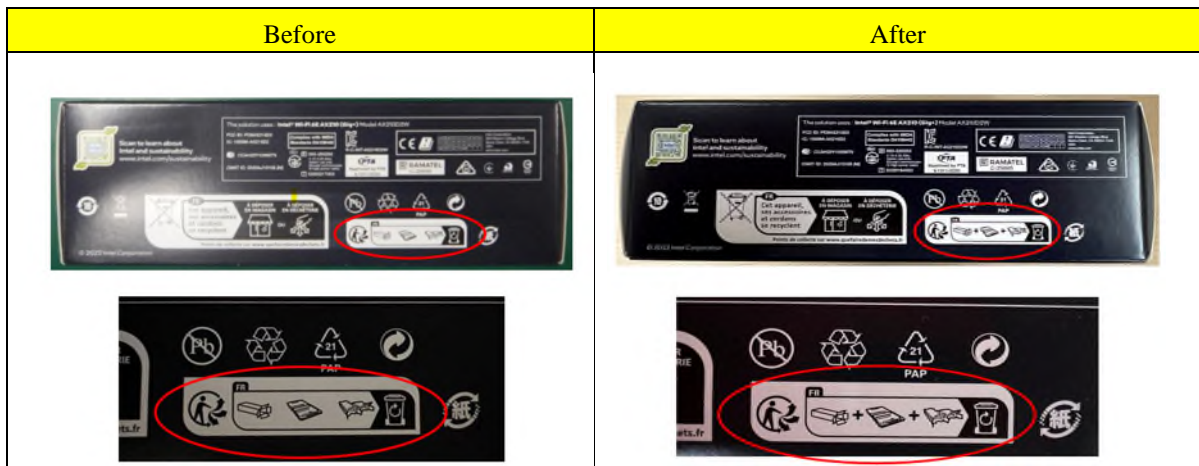
Forecasted Key Milestones:

| | |
|--|----------------|
| Date Customer Must be Ready to Receive Post-Conversion Material | April 04, 2023 |
|--|----------------|

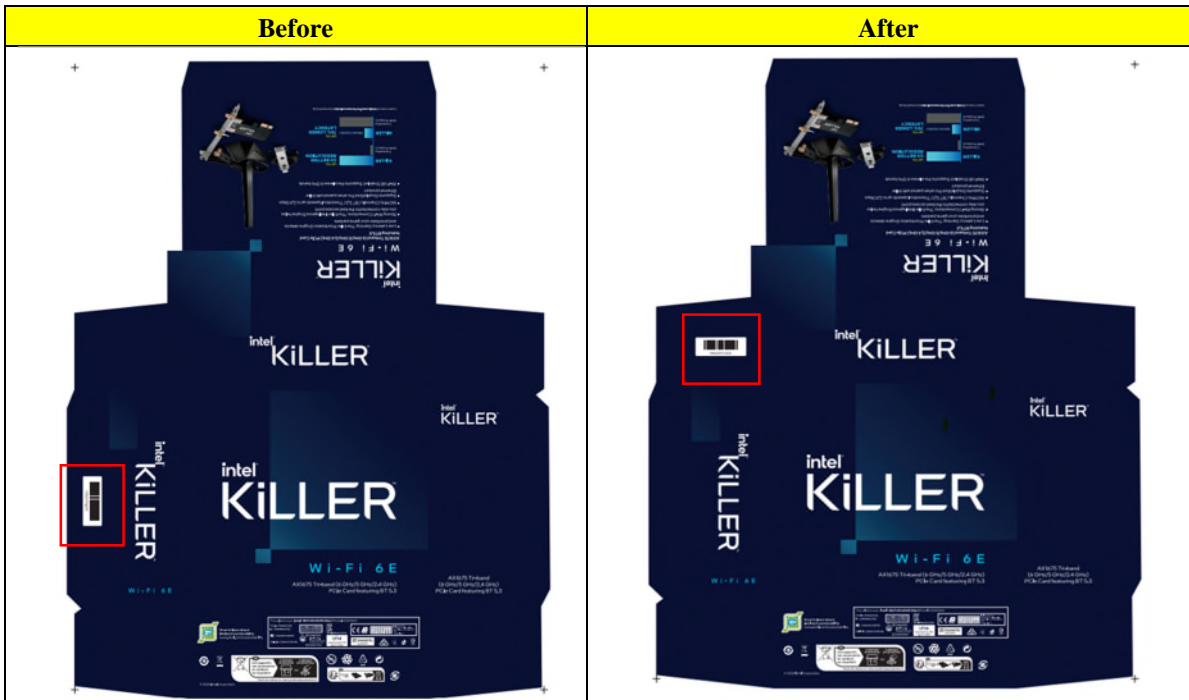
Description of Change to the Customer:

The Intel® Wi-Fi 6E AX210 and the Intel® Killer™ Wi-Fi 6E AX1675 1216 SKUs listed in the products affected table below will undergo the following changes.

- 1) Increase the quantity of desiccant bag from 1 to 2 pieces (Not applicable to AX210.D2WG.NVXC).
- 2) Update Japan regulatory ID with Wi-Fi 6E certification on Disti box label (Not applicable to AX210.D2WG.NVXC).
- 3) Add the plus signs in the French Triman logo which is located on the product packaging of AX210.D2WG.NVXC.



4) Relocate the Intel Part Number barcode on the product packaging of AX210.D2WG.NVXC.



5) The Intel Tracking revision will be changed on the following products.

| Product Code | Before | After |
|---------------|--------|-------|
| AX210.D2WG | 0C | 0D |
| AX210.D2WG.NV | 0C | 0D |

6) Product TA# dash up.

| Product code | TA Before | TA After |
|-----------------|------------|------------|
| AX210.D2WG | M17946-003 | M17946-004 |
| AX210.D2WG.NV | M26847-003 | M26847-004 |
| AX210.D2WG.NVX | M26850-003 | M26850-004 |
| AX210.D2WG.NVXC | M69440-001 | M69440-002 |

Disti Label – Before AX210.D2WG

| | | | | | |
|--|---|--|---|--|--|
| AX210.D2WG VERSION #: M17946-003 MADE IN XXXXX WITH PARTIAL FOREIGN CONTENT CARTON #: VVXXXXXXXX | MM #: XXXXXX PACK DATE: DD MMM YY PACKED BY: XXXXXX BATCH #: CCVVYMDRSS | QTY: 1000 1 88334 00140 2 9 310779 300005 | Intel® Wi-Fi 6E AX210 (Model: AX210D2W) PKG ID (3S) VVVVMMMMDD###XXXXX1000 | T P/N: GDM48000235 D P/N: XXXXXX REV AXX HP P/N: M25746-00 REV: 0C | CE, UK, CA, FCC, CCAH20Y10090T9, R03-220255, 5.15-5.35 GHz (Indo), (Except communications), C220217003, Intel Corporation, 2200 Mission College Blvd, Santa Clara, CA 95054-1549, USA, www.intel.com, CMMT ID: 2020AJ15108 (M), APPROVED BY PTA, 9.1311/2020, R-C-INT-AX210D2W |
| | | | Vendor ID Loc Id VVVVVLLLLL MMMMM | L P/N: SW10T06476 EC: 3742164 | |

Disti Label – After AX210.D2WG

| | | | | | |
|--|---|--|---|--|--|
| AX210.D2WG VERSION #: M17946-004 MADE IN XXXXX WITH PARTIAL FOREIGN CONTENT CARTON #: VVXXXXXXXX | MM #: XXXXXX PACK DATE: DD MMM YY PACKED BY: XXXXXX BATCH #: CCVVYMDRSS | QTY: 1000 1 88334 00140 2 9 310779 300005 | Intel® Wi-Fi 6E AX210 (Model: AX210D2W) PKG ID (3S) VVVVMMMMDD###XXXXX1000 | T P/N: GDM48000235 D P/N: XXXXXX REV AXX HP P/N: M25746-00 REV: 0D | CE, UK, CA, FCC, CCAH20Y10090T9, R03-220255, 5.15-5.35 GHz (Indo), (Except communications), C220164003, Intel Corporation, 2200 Mission College Blvd, Santa Clara, CA 95054-1549, USA, www.intel.com, CMMT ID: 2020AJ15108 (M), APPROVED BY PTA, 9.1311/2020, R-C-INT-AX210D2W |
| | | | Vendor ID Loc Id VVVVVLLLLL MMMMM | L P/N: SW10T06476 EC: 3742164 | |

AX210.D2WG Reel -Before

| | |
|--|--|
| intel. AX210.D2WG MM #: XXXXXX TA: M17946-003 T P/N: GDM48000235 L P/N: SW10T06476 | R/ID: XXXXXXXXXXXX QTY: XXXX HP P/N: M25746-001 REV 0C XXXX-XXXXXXXXXXXXX D P/N: XXXXXX REV AXX |
|--|--|

AX210.D2WG Reel - After

| | |
|--|--|
| intel. AX210.D2WG MM #: XXXXXX TA: M17946-004 T P/N: GDM48000235 L P/N: SW10T06476 | R/ID: XXXXXXXXXXXX QTY: XXXX HP P/N: M25746-001 REV 0D XXXX-XXXXXXXXXXXXX D P/N: XXXXXX REV AXX |
|--|--|

Disti Label – Before AX210.D2WG.NV

| | | | | | |
|--|--|---|--|---|--|
| AX210.D2WG.NV QTY: 1000 MM #: XXXXXX VERSION #: M26847-003 MADE IN XXXXX WITH PARTIAL FOREIGN CONTENT CARTON #: VVXXXXXXXXX BATCH #: CCVVYMDRSS | | Intel® Wi-Fi 6E AX210 (Model: AX210D2W) PKG ID (3S) VVVVMMMMDDDD###XXXXXX1000 T P/N: GDM48000236 D P/N: XXXXXX REV AXX HP P/N: M25748-001 REV: 0C Vendor ID Loc Id Mig Id L P/N: SW10T06479 VVVVVLLLLL MMMMM EC: 3742164 | | CE, UK, CA, FCC, CCAH20Y1000T9, 003-220255, 5.15-5.35 GHz, RDFS, Energy Compulsory, 0202017003, Intel Corporation, 2500 Mission College Blvd, Santa Clara, CA 95054-1549, USA, www.intel.com, CMIIT ID: 2020AJ1510B (M), APPROVED BY PTA, 9.1311/2020, R-C-INT-AX210D2W | |
|--|--|---|--|---|--|

Disti Label – After AX210.D2WG.NV

| | | | | | |
|--|--|---|--|--|--|
| AX210.D2WG.NV QTY: 1000 MM #: XXXXXX VERSION #: M26847-004 MADE IN XXXXX WITH PARTIAL FOREIGN CONTENT CARTON #: VVXXXXXXXXX BATCH #: CCVVYMDRSS | | Intel® Wi-Fi 6E AX210 (Model: AX210D2W) PKG ID (3S) VVVVMMMMDDDD###XXXXXX1000 T P/N: GDM48000236 D P/N: XXXXXX REV AXX HP P/N: M25748-001 REV: 0D Vendor ID Loc Id Mig Id L P/N: SW10T06479 VVVVVLLLLL MMMMM EC: 3742164 | | CE, UK, CA, FCC, CCAH20Y1000T9, 003-220255, 5.15-5.35 GHz, RDFS, Energy Compulsory, 02020144003, Intel Corporation, 2500 Mission College Blvd, Santa Clara, CA 95054-1549, USA, www.intel.com, CMIIT ID: 2020AJ1510B (M), APPROVED BY PTA, 9.1311/2020, R-C-INT-AX210D2W | |
|--|--|---|--|--|--|

AX210.D2WG.NV Reel -Before

| | |
|---|---|
| intel. AX210.D2WG.NV MM #: XXXXXX TA: M26847-003 T P/N: GDM48000236 L P/N: SW10T06479 | R/ID: XXXXXXXXXXXX QTY: XXXX HP P/N: M25748-001 REV 0C XXXX-XXXXXXXXXXXXX D P/N: XXXXXX REV AXX |
|---|---|

AX210.D2WG.NV Reel - After

| | |
|---|---|
| intel. AX210.D2WG.NV MM #: XXXXXX TA: M26847-004 T P/N: GDM48000236 L P/N: SW10T06479 | R/ID: XXXXXXXXXXXX QTY: XXXX HP P/N: M25748-001 REV 0D XXXX-XXXXXXXXXXXXX D P/N: XXXXXX REV AXX |
|---|---|

| | |
|-----------------------------|--|
| intel. AX210.XXXXXX | R/ID: XXXXXXXXXX QTY: XXXX |
| MM #: XXXXXX | |
| TA: XXXXXX-XXX | HP P/N: XXXXXX-XXX REV XX |
| T P/N: XXXXXXXXXXXXX | XXXX-XXXXXXXXXXXX |
| L P/N: XXXXXXXXXXXX | D P/N: XXXXXX REV AX |

Disti Label – Before AX210.D2WG.NVX

| | | | | | | | |
|---|--|-------------------------------------|----------------------------|----------------------------------|-------|--|--|
| AX210.D2WG.NVX | QTY: 1000 | Intel® Killer™ Wi-Fi 6E AX1675w | Intel® (Model: AX210D2W) | CE | UK | AT BE BG CH CY CZ DE DK EE EL ES FI FR GR HU IE IS IT LI LT LU LV MT NL PL PT RO SE SI SK TR UK (NI) | Intel Corporation 2200 Mission College Blvd Santa Clara, CA 95054-1549 USA www.intel.com |
| VERSION #: M26850-003 | MM #: XXXXXX | PKG ID (3S) VVVVMMMMDD####XXXXX1000 | T P/N: XXXXXXXXXX | UK CA | UK CA | CCAH20Y10090T9 | CMIT ID: 2020AJ15108 (M) |
| MADE IN XXXX WITH PARTIAL FOREIGN CONTENT CARTON #: VVXXXXXXXX | PACK DATE: DD MMM YY PACKED BY: XXXXXX BATCH #: CCVVYMDRSS | D P/N: XXXXXX REV AX | HP P/N: XXXXXX-XXX REV: XX | UK CA | UK CA | 003-200255 5.15-5.35 GHz (3000 MHz) | R-C-INT-AX210D2W |
| | | Vendor ID Loc Id VVVVVVVVVV | Mfg Id MMMMMM | L P/N: SW11A40374 EC: 4175875 | | | |

Disti Label – After AX210.D2WG.NVX

| | | | | | | | |
|---|--|-------------------------------------|----------------------------|----------------------------------|-------|--|--|
| AX210.D2WG.NVX | QTY: 1000 | Intel® Killer™ Wi-Fi 6E AX1675w | Intel® (Model: AX210D2W) | CE | UK | AT BE BG CH CY CZ DE DK EE EL ES FI FR GR HU IE IS IT LI LT LU LV MT NL PL PT RO SE SI SK TR UK (NI) | Intel Corporation 2200 Mission College Blvd Santa Clara, CA 95054-1549 USA www.intel.com |
| VERSION #: M26850-004 | MM #: XXXXXX | PKG ID (3S) VVVVMMMMDD####XXXXX1000 | T P/N: XXXXXXXXXX | UK CA | UK CA | CCAH20Y10090T9 | CMIT ID: 2020AJ15108 (M) |
| MADE IN XXXX WITH PARTIAL FOREIGN CONTENT CARTON #: VVXXXXXXXX | PACK DATE: DD MMM YY PACKED BY: XXXXXX BATCH #: CCVVYMDRSS | D P/N: XXXXXX REV AX | HP P/N: XXXXXX-XXX REV: XX | UK CA | UK CA | 003-200255 5.15-5.35 GHz (3000 MHz) | R-C-INT-AX210D2W |
| | | Vendor ID Loc Id VVVVVVVVVV | Mfg Id MMMMMM | L P/N: SW11A40374 EC: 4175875 | | | |

Customer Impact of Change and Recommended Action:

The label and transport media changes to the products do not affect functionality.

Intel will attempt to deplete pre-conversion material before shipping post-conversion material but there is a possibility of Intel shipping mixed inventory. Therefore, customers will need to manage and migrate to the post-conversion material as soon as possible.

Milestone dates are estimates and subject to change based on business and operational conditions.

Please contact your local Intel Field Sales Representative if you have any further questions about these changes.

Products Affected/Intel Ordering Codes:

| Marketing Name | Product Code | MM# | Pre Change TA | Post Change TA |
|---|-----------------|--------|---------------|----------------|
| Intel® Wi-Fi 6E AX210 (Gig+), 1216, 2x2 AX R2 (6GHz)+BT, vPro® | AX210.D2WG | 999M9X | M17946-003 | M17946-004 |
| Intel® Wi-Fi 6E AX210 (Gig+), 1216, 2x2 AX R2 (6GHz)+BT, No vPro® | AX210.D2WG.NV | 999MA0 | M26847-003 | M26847-004 |
| Intel® Killer Wi-Fi 6E AX1675 w (Gig+), 1216, 2x2 AX R2 (6GHz)+BT, No vPro® | AX210.D2WG.NVX | 999MA2 | M26850-003 | M26850-004 |
| Intel® Killer Wi-Fi 6E AX1675 PCI Card | AX210.D2WG.NVXC | 99C05Z | M69440-001 | M69440-002 |

PCN Revision History:

Date of Revision:

March 02, 2023

Revision Number:

00

Reason:

Originally Published PCN



Product Change Notification

119468-00

Notices & Disclaimers

No license (express or implied, by estoppel or otherwise) to any intellectual property rights is granted by this document.

Intel disclaims all express and implied warranties, including without limitation, the implied warranties of merchantability, fitness for a particular purpose, and non-infringement, as well as any warranty arising from course of performance, course of dealing, or usage in trade, except as provided in a separate written agreement.

You may not use or facilitate the use of this document in connection with any infringement or other legal analysis concerning Intel products described herein. You agree to grant Intel a non-exclusive, royalty-free license to any patent claim thereafter drafted which includes the subject matter disclosed herein.

The products described may contain design defects or errors known as errata which may cause the product to deviate from published specifications. Current characterized errata are available on request.

Statements in this document that refer to future plans or expectations are forward-looking statements. These statements are based on current expectations and involve many risks and uncertainties that could cause actual results to differ materially from those expressed or implied in such statements. For more information on the factors that could cause actual results to differ materially, see our most recent earnings release and SEC filings at www.intc.com.

Customer is responsible for safety of the overall system, including compliance with applicable safety-related requirements or standards.

Intel technologies may require enabled hardware, software or service activation.

No product or component can be absolutely secure.

Your costs and results may vary.

©Intel Corporation. Intel, the Intel logo, and other Intel marks are trademarks of Intel Corporation or its subsidiaries. Other names and brands may be claimed as the property of others.

No response from customers will be deemed an acceptance of the change, and the change will be implemented pursuant to the key milestones set forth in this attached PCN.

Should you have any issues with the timeline or content of this change, please contact the Intel Representative(s) for your geographic location listed below.

Americas Contact: asmo.pcn@intel.com

Asia Pacific/PRC Contact: apacgccb@intel.com

Europe Email: eccb@intel.com

Japan Email: jccb.ijkk@intel.com